

Annex B – Safety Measures Information Guide

The following guidance should be reviewed with Sample Collection Personnel (SCP). This information can be adapted based on any further national and/or health regulations specific to the relevant country. Please amend accordingly.

1. Gloves

When wearing gloves, instruct SCP to:

- Perform hand hygiene immediately before using and after removing gloves. It is important that hands be clean and dry before putting gloves on.
- Change gloves and perform hand hygiene during sample collection if gloves become damaged or gloves become visibly soiled with blood or body fluids following a task.
- Never wear the same pair of gloves for more than a single sample collection.
- Carefully remove gloves to prevent hand contamination. Follow the instructions provided in the diagram below and ensure that there is no direct contact with the outside of the gloves.



Additional Reminders:

- **DON'T** remove one glove, and then pull the other glove off by the fingertips.
- **DON'T** reuse disposable gloves once they have been removed.
- **DO** change gloves when heavily soiled or if torn.
- **DO** dispose of used gloves appropriately.
- **DO** cleanse hands before putting gloves on and after their removal and disposal.

Reference: <https://www.globus.co.uk/how-to-safely-remove-disposable-gloves>

2. Face Masks

When using disposable face masks, SCP should be informed of the following:

- a) Disposable face masks should only be used once.
- b) Disposable face masks are effective only when used in combination with frequent hand-cleaning with alcohol-based hand rub or soap and water.
- c) Disposable face masks must be removed along with other waste generated from the sample collection session (i.e., SCP must leave with all the sample collection session waste).
- d) When using disposable face masks, follow these instructions:
 - i. Before putting on a mask, clean hands with alcohol-based hand rub or soap and water.
 - ii. Cover mouth and nose with mask and make sure there are no gaps between your face and the mask.
 - iii. Avoid touching the mask while using it; if you do, clean your hands with alcohol-based hand rub or soap and water.
 - iv. Replace the mask with a new one as soon as it is damp and do not re-use single-use masks.
 - v. To remove the mask: remove it from behind (do not touch the front of mask); discard immediately in a closed bin; clean hands with alcohol-based hand rub or soap and water.



Reference: <https://www.who.int/images/default-source/health-topics/coronavirus/risk-communications/general-public/protect-yourself/infographics/masks-infographic---final.tmb-1920v.png>

3. Hand Washing

Instruct SCP to:

- a) Clean their hands by rubbing them with an alcohol-based formulation, as the preferred mean for routine hygienic hand antisepsis, if hands are not visibly soiled. It is faster, more effective, and better tolerated by hands than washing with soap and water. This should take 20-30 seconds and is referred to as the **'hand rub' technique**.
- b) Wash their hands with soap and water when hands are visibly dirty or visibly soiled by body fluids or after using the toilet. This should take 40-60 seconds and is referred to as the **'hand wash' technique**.

HOW TO HANDRUB?

RUB HANDS FOR HAND HYGIENE! WASH HANDS WHEN VISIBLY SOILED

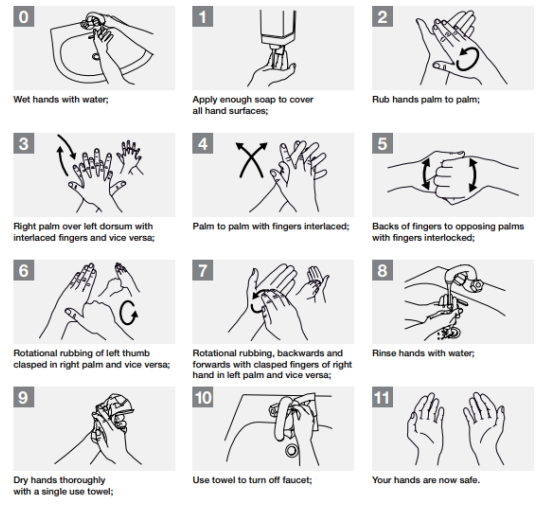
⌚ Duration of the entire procedure: 20-30 seconds



HOW TO HANDWASH?

WASH HANDS WHEN VISIBLY SOILED! OTHERWISE, USE HANDRUB

⌚ Duration of the entire procedure: 40-60 seconds



Reference: World Health Organization, Hand Hygiene:
[https://www.who.int/gpsc/5may/Hand Hygiene Why How and When Brochure.pdf](https://www.who.int/gpsc/5may/Hand_Hygiene_Why_How_and_When_Brochure.pdf)