



# Accommodation and Transport Guide

## Para Swimming World Series – Lima 2025

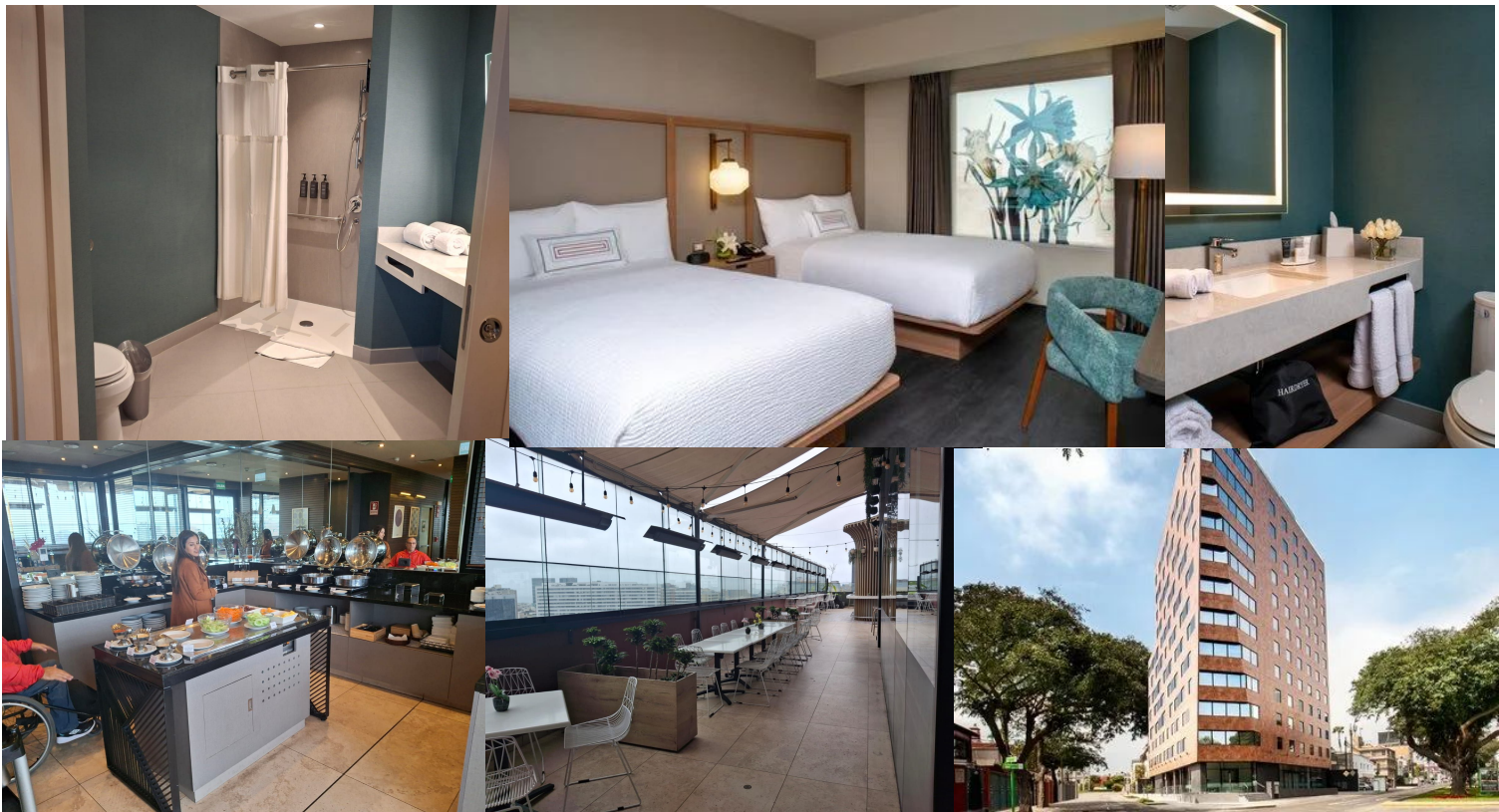


# Introduction

- This guide is intended to provide information about the hotels and transportation offered by the local organizing committee.
- It is important to emphasize that transportation to the competition venue and/or classifications areas will not be provided from other hotels.
- Three hotels are being considered: two 4-star hotels and one 3-star hotel, which will have rooms that will be adapted for wheelchair users.
- In addition, adapted transport services for wheelchair users and non-wheelchair users are being considered from official hotels to the competition venue.
- Transport specific schedules will be detailed later but will be available from the 20<sup>th</sup> to the 25<sup>th</sup> of October to the competition venue and the classification clinic (for VI).



# FAIRFIELD BY MARRIOTT



Address	Martin Dulanto 128 Miraflores
Category	3*
Distance to venue	5.6 km
Average Time to venue	30 - 45 mins
Amenities	<ul style="list-style-type: none"> <li>- 5 minutes from the center of Miraflores</li> <li>- Tourist district</li> <li>- Close to parks and restaurants</li> </ul>



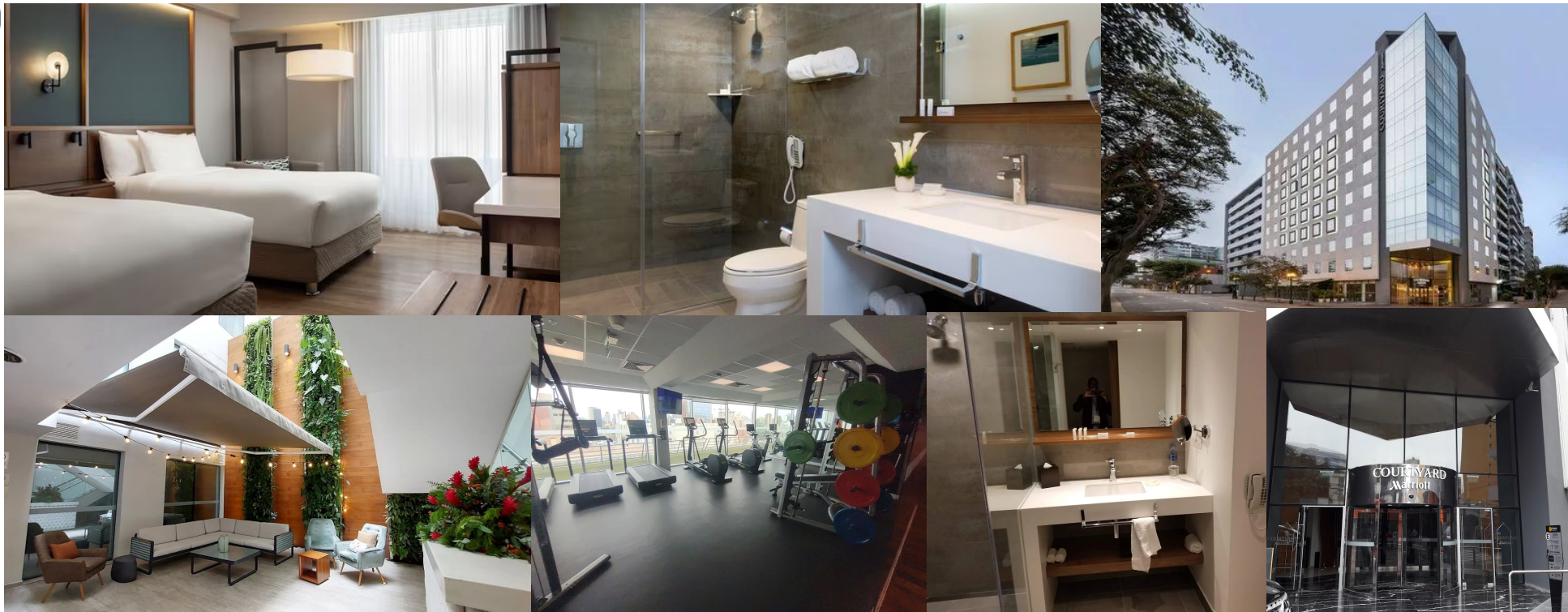
# CASA ANDINA PREMIUM – SAN ISIDRO



Address	Amador Merino Reyna 320 San isidro
Category	4*
Distance to venue	3.5 km
Average Time to venue	30 mins
Amenities	<ul style="list-style-type: none"><li>- Located in the Financial Center in San Isidro</li><li>- Close to restaurants and retails</li></ul>



# COURTYARD BY MARRIOTT - MIRAFLORES



Address	Schell 400, Miraflores
Category	4*
Distance to venue	5.7 km
Average Time to venue	30 - 45 mins
Amenities	<ul style="list-style-type: none"> <li>- Located in the center of Miraflores (tourist district)</li> <li>- 5 minutes from Larcomar</li> <li>- Very close to restaurants and commercial premises</li> </ul>



## Transport: hotels to competition venue

- For the transportation system, adapted vehicles are being considered, which will allow up to four wheelchair users to travel simultaneously from the official hotels to the competition venue.
- These units will also allow for 4 to 6 seated passengers.
- Ramps will be provided at the hotels and at the competition venue for proper boarding and disembarkation of vehicles.





## Transport: hotels to competition venue





# Costs - Twin room

Transport + Fairfield Hotel (3 stars):  
**715 USD per person**

- 3 stars hotel
- 07 nights: from October 19 to 25
- Twin room
- Breakfast
- Transport to competition venue during training, classification and competition days

Transport + Courtyard or Casa Andina Hotel (4 stars): **785 USD per person**

- 4 stars hotel
- 07 nights: from October 19 to 25
- Twin room
- Breakfast
- Transport to competition venue during training, classification and competition days

\*Availability is on a first-come, first-served basis

\*\* Transport from airport, lunch and dinner are not included.



# Costs - Single room

Transport + Fairfield Hotel (3 stars):  
**785 USD per person**

- 3 stars hotel
- 07 nights: from October 19 to 25
- Twin room
- Breakfast
- Transport to competition venue during training, classification and competition days

Transport + Courtyard or Casa Andina Hotel (4 stars): **865 USD per person**

- 4 stars hotel
- 07 nights: from October 19 to 25
- Single room
- Breakfast
- Transport to competition venue during training, classification and competition days

\*Availability is on a first-come, first-served basis  
\*\*\* Transport from airport, lunch and dinner are not included.



# Transport from airport

## Transport from airport to hotel\*

- Cost per trip for an adapted van (3 people in wheelchairs and 2 people seated) with luggage: **200 USD**
- Cost of a van (not adapted) for 8 people with luggage: **100 USD**
- Cost of a car (not adapted) for two people with luggage: **65 USD**

\*The airport does not provide adapted mobility services for transport.



# Contact and process

- Accommodation and transportation requirements will be through the following email:
- [locperu.wps.npcservices@gmail.com](mailto:locperu.wps.npcservices@gmail.com)

## Accommodation

- Number of people and rooms needed
- Arrival/departure date and flight numbers
- Excel spreadsheet with first and last names and passport numbers (number and copy)
- Wheelchair users
- Hotel you are staying

## Airport Transport :

- Arrival/departure date and flight numbers
- Wheelchair users
- Hotel you are staying



# Accommodation and Transport Guide

## Para Swimming World Series – Lima 2025