



ACCOMMODATION PACKAGE

GENERAL INFORMATION

Welcome

The Para Swimming World Series is back in Berlin! We are delighted to welcome you to one of the world's fastest pools, a venue where numerous world records have already been set. In 2026, the world's para swimming elite will once again gather in the heart of Europe to compete at the highest level.

For 2026, the German capital will introduce a brand-new setup dedicated exclusively to the World Series format. This marks an exciting new chapter for Berlin, one of the world's most renowned para swimming locations, now hosting a fully focused World Series meet that promises fast times and world-class performances.

World Para Swimming, in cooperation with the Behinderten- und Rehabilitations-Sportverband Berlin e.V. (Federation for disability and rehabilitation sports Berlin) is pleased to present the Accommodation Package for the Para Swimming World Series Berlin. In this guide, you will find all essential information regarding your stay in Berlin.

We look forward to welcoming you to Berlin. Should you have any questions, please contact the LOC representative listed below.

Dates & General Information

Classification:

Physical Impairment (PI)	04 - 06 May 2026
Vision Impairment (VI)	05 - 06 May 2026
Intellectual Impairment (II)	05 - 06 May 2026 (TBC)

Training: 04 - 06 May 2026

Earliest arrival day: 03 May 2026

Lates departure day: 12 May 2026*

*At the Hotel Vienna House by Wyndham Andel's Berlin the latest departure day is: 11 May 2026

Competition Dates: 07 - 09 May 2026

Preliminary Forecast: 07 January 2026
(non-Binding)

Final Accommodation Form 11 February 2026
(Binding)

LOC Main Contact:

Mr. Matthias Vanell

paraswimming@roughwaterand.com

ACCOMMODATION PACKAGE

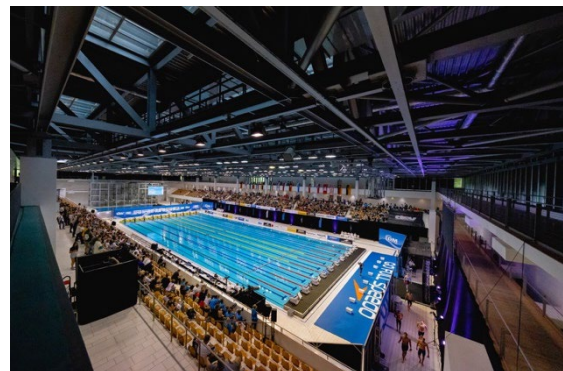
To provide participating nations with a smooth and professional event experience, the LOC's accommodation package includes a range of services beyond standard lodging. The below mentioned benefits apply for teams staying at one of the official event hotels.

- **Shuttle services**, including:
 - Airport transfers upon arrival and departure
 - Transfers to and from the classification location
 - Regular shuttle service between the Good Morning+ Hotel and the competition venue according to the official schedule
- **Full board (three meals per day)** tailored to athletes and team officials
Should the preferred hotel be fully booked, reservations will be upgraded to the next available higher category, subject to availability. The corresponding rate of the higher category will apply. Allocation is handled on a first-come, first-served basis.

1. Venue Overview

The competition will be held at “Schwimm- & Sprunghalle im Europasportpark” (SSE) in Berlin. The 3.000 seat facility features a 10 lane 50m competition pool and a 10 lane 50m warm-up pool.

Location: Schwimm- und Sprunghalle im Europasportpark (SSE)
Paul-Heyse-Straße 26
10407 Berlin Pankow
[Maps](#)



2. Traveling to Berlin

2.1. By Plane

Berlin Brandenburg Airport (BER) is the nearest airport, located approximately 60 minutes (26km) from the venue. Transfers will be arranged upon arrival at this airport for delegations whose reservations at one of the official hotels have been made through and confirmed by the Local Organizing Committee.

2.2. By Train

Berlin offers excellent rail connections from across Germany and Europe. The following long-distance stations provide convenient access to the venue and the official hotels. Considering Berlin's city traffic, it is recommended to take the S-Bahn or tram to "Landsberger Allee" station, which is located directly opposite the venue and close to the official hotels. Transfers from one of the railway stations mentioned below may be arranged upon request for delegations whose reservations at one of the official hotels have been made through and confirmed by the Local Organizing Committee.

Berlin Central Station (Hauptbahnhof)

Berlin Central Station is Berlin's main railway hub, welcoming trains from all major German and European cities. The venue is easily accessible within approximately 25 minutes by tram lines M8 or M5. Transfer by car is 25 to 35 minutes (8km).

Berlin East Station (Ostbahnhof)

Berlin East Station offers excellent connections for guests arriving from eastern regions. The venue is conveniently accessible within approximately 15 minutes by taking the S3, S5 or S7 to Ostkreuz and continuing on the S8, S42 or S85. Transfer by car is 15 to 25 minutes (4km).

Berlin Gesundbrunnen

Berlin Gesundbrunnen serves as an important northern gateway to the city, with frequent long-distance and regional train services. From Gesundbrunnen you can take the S41 and reach the Venue in just 7 minutes. By car the venue is reachable in 15 to 20 minutes (6km).

Please note that if you arrive at any airport or station not listed above, the LOC will not be able to offer transportation to the hotel/venue. You will need to make your own way to one of the listed airports or stations to access LOC-provided transportation. Otherwise, you will need to arrange your own travel to the hotel/venue.

3. Visas

Each team is responsible to ensure they have the proper documentation to enter Germany.

Please use the following button to check if you require an entry VISA:

VISA Requirements

Should you require a visa, you can request a letter of support from paraswimming@roughwaterand.com with the following information on all staff and athlete's attending from your NPC:

- Full Name
- Position
- Date of Birth
- Passport Number
- Passport Expiry Date

Please note that preparing letters of invitation for a visa may take up to 3 or 4 business days.

4. Booking Process

Please provide a non-binding forecast latest by **07 January 2026** for single and double rooms via the following button:

Forecast Form

After submission of the Forecast Form, the Final Accommodation Form will be provided. Delegations may complete their room assignments until the deadline on **11 February 2026** by using the Final Accommodation Form.

After the teams have booked their binding accommodation via the Final Accommodation Form, they will receive an invoice to the provided e-mail address.

Booking will be definitively confirmed upon full payment reception. The final Accommodation request must be completed before **11 February 2026**.

Cancellations are free of charge before 11 February 2026. After this date, cancellations will be charged 100%.

5. Additional Information

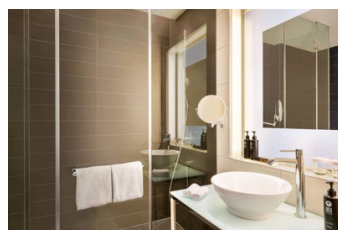
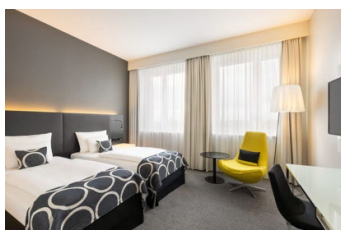
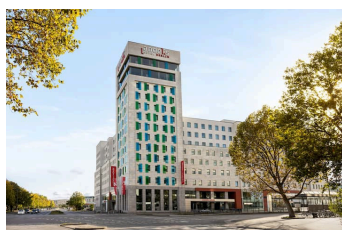
Please note: We have asked the hotels to close the minibars and to lock pay-TV channels. If you want to use these services, please talk to the receptionists. The telephone lines are open. If you use any of these devices/services, you will have to pay for them directly at the hotel. The LOC does not bear any additional costs.

6. Accommodation

All Hotel package rates below include accommodation (rate per room per night) with breakfast, lunch and dinner (full-board catering provided) and all taxes.

Your package includes dinner on the day of arrival and breakfast on the day of departure to ensure a comfortable start and end to your stay.

Vienna House by Wyndham Andel's Berlin | 4-Star superior Hotel



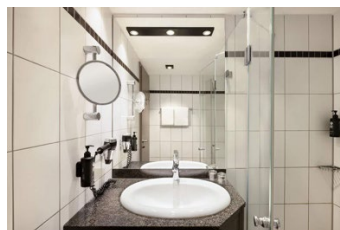
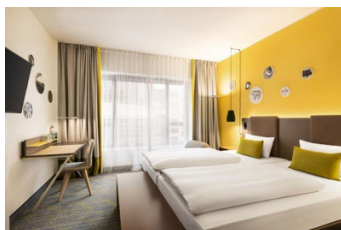
The Vienna House Andel's Berlin is a 4-star superior hotel located in the bustling heart of Berlin and within a five-minute walk of the competition venue. The hotel offers modern design, spacious rooms and top-notch amenities. Enjoy stunning views of the city from the Skykitchen restaurant and bar, relax and unwind at the SpaSphere, or take advantage of the hotel's central location to explore all that Berlin has to offer.

Distance from venue: 5 min (walking distance) / 0,5km

All prices include airport transportations, full board and all taxes

Single room:	350,00 EUR per night/person
Double room:	249,00 EUR per night/person
Triple room:	On request

Vienna House Easy by Wyndham Berlin Prenzlauer Berg | 3-Star Hotel



Newly opening in late-September 2016, Vienna House Easy by Wyndham Berlin Prenzlauer Berg features modern rooms with fresh blue, tangy orange and lively yellow-green colour schemes. All rooms are equipped with casual furniture, local decorative elements and comfortable box-spring beds. Free high-speed Wi-Fi, digital newspapers and a bottle of water are also provided.

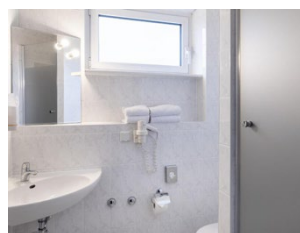
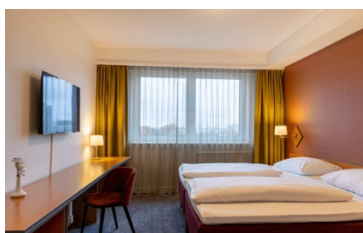
Distance from venue 5 min (walking distance) / 0,5km

All prices include airport transportations, full board and all taxes

*Lunch & Dinner at Vienna House by Wyndham Andel's Berlin (across the street)

Single room:	315,00 EUR per night/person
Double room:	230,00 EUR per night/person
Triple room:	On request

Good Morning+ Berlin City East



Good Morning + Berlin City East in Berlin offers rooms with private bathrooms, city views, and modern amenities including free WiFi, work desks, and flat-screen TVs.

Distance from venue 10 min / 3,0km (shuttle incl.)

All prices include airport transportations, full board and all taxes

*Lunch at venue

Single room:	269,00 EUR per night/person
Double room:	192,50 EUR per night/person
Triple room:	On request

7. Extend your stay

Right after the Para Swimming World Series, the **International German Championships (IDM)** will take place in Berlin from **10 - 12 May 2026**.

For many years, the IDM has brought together para swimmers from several countries and provided a platform for both established champions and emerging national and international talents to compete at a high level.

Please note, that this year, the IDM will be organized as a **standalone event**. Further information will be published soon.