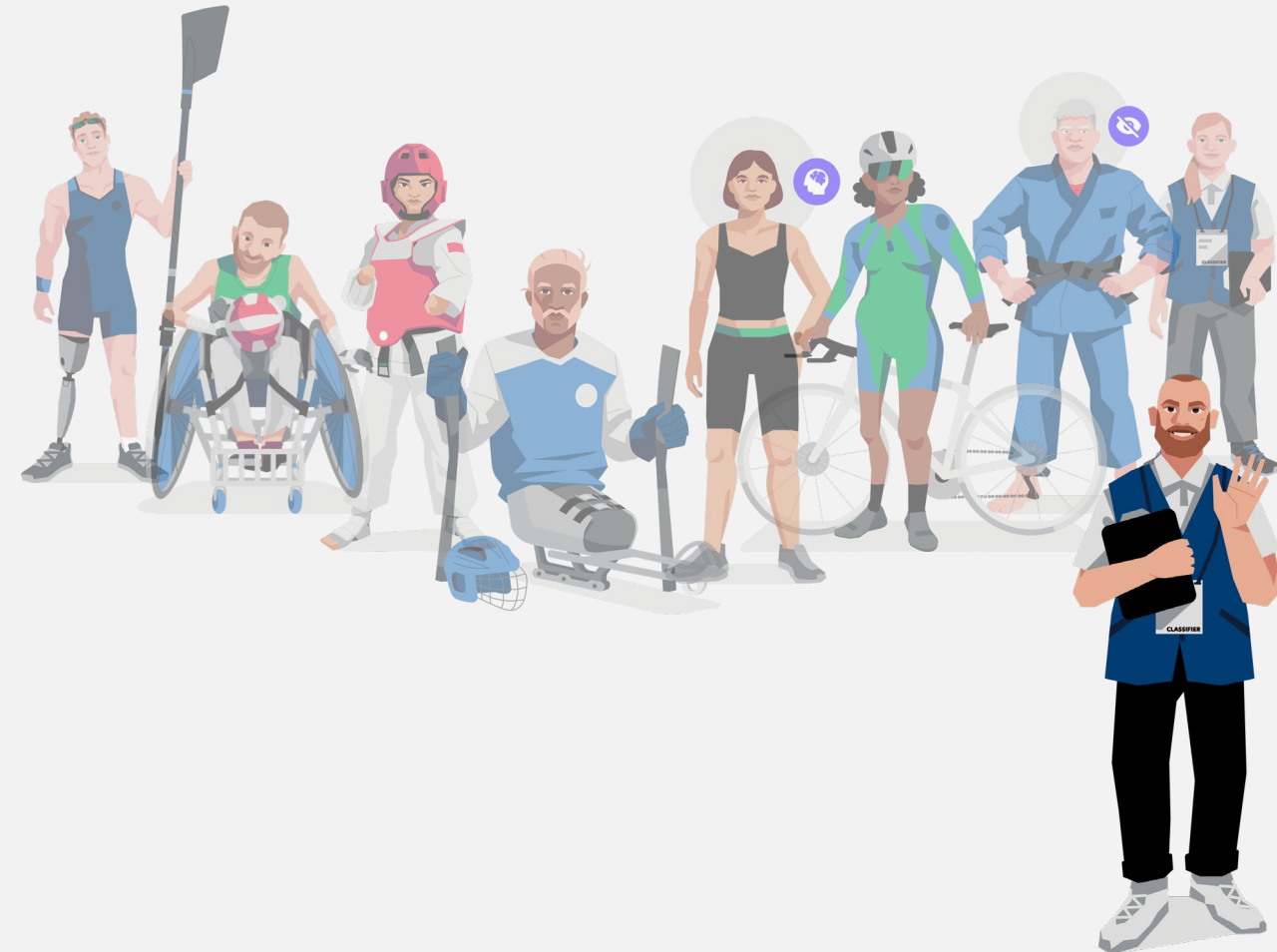




# IPC CLASSIFICATION RESEARCH GRANT 2<sup>ND</sup> CALL FOR APPLICATIONS

29 APRIL 2026

INTERNATIONAL PARALYMPIC COMMITTEE



# HOUSEKEEPING

The image shows a Zoom meeting interface. At the top, there is a dark grey toolbar with various icons. The icons for 'Chat', 'Q&A', and 'Raise' are highlighted with red boxes. The 'Raise' icon is a hand with the index finger pointing up. Below the toolbar, the main area is dark grey and contains a large white circle with the letters 'WJ' inside. Below the circle, the text 'Waiting for others to join...' is displayed in white. On the right side of the toolbar, there are two buttons: a yellow 'Start meeting' button and a red 'Leave' button with a white telephone handset icon.



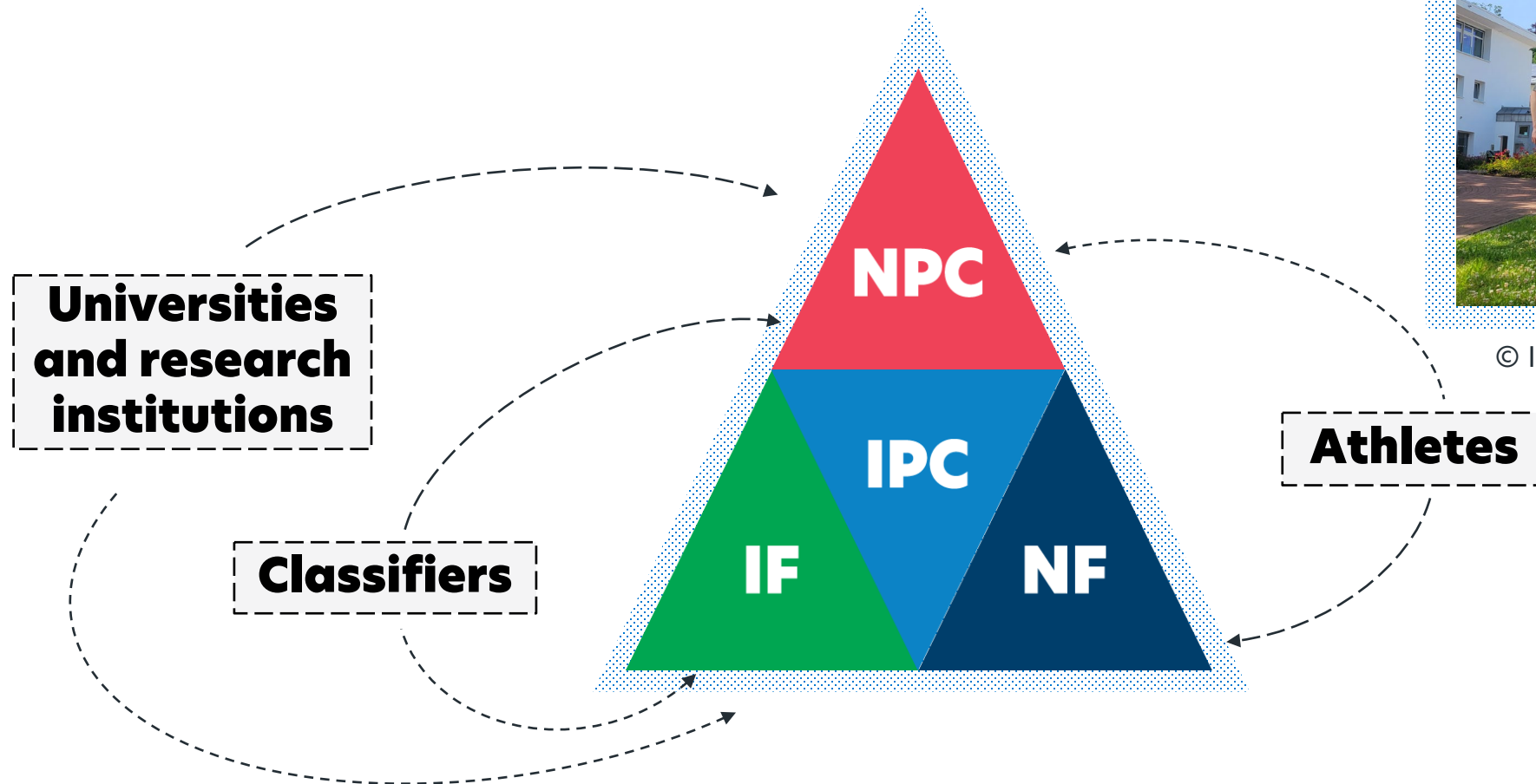
# AGENDA

- Introduction
- Classification Research Grant Scheme
- Application process - Phase 1
- Application process - Phase 2
- Q&A



# INTRODUCTION

## WHO WE ARE AND WHAT WE DO



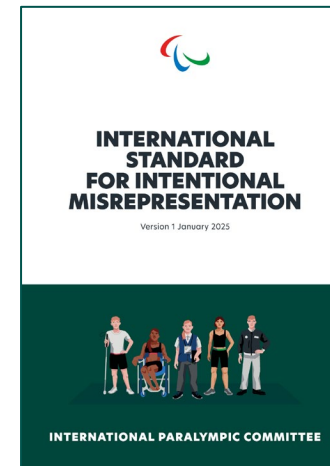
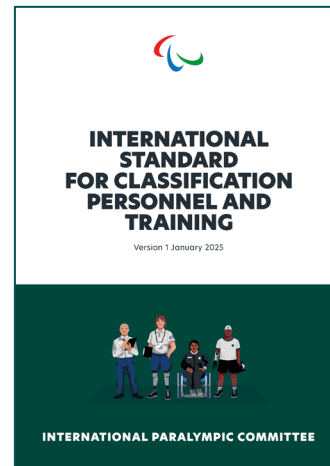
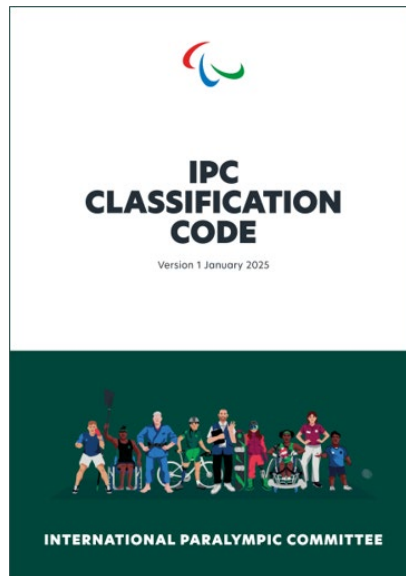
© IPC, Classification department, June 2025



# INTRODUCTION

## IPC CLASSIFICATION CODE

- The IPC Classification Code is the fundamental document upon which Classification in the Paralympic Movement must be based.
- Under the Code, each IF must develop and maintain a fit for purpose classification system and publish classification rules in compliance with the Code.





# **CLASSIFICATION RESEARCH GRANT SCHEME**

**2026 CALL**



# 2026 IPC CLASSIFICATION RESEARCH GRANT <sup>15</sup>

## THE AIM

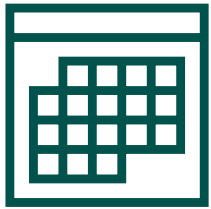
- This grant aims to support the development and improvement of best practice and evidence-based classification systems in Para sports through the delivery of multidisciplinary research projects.
- The resulting research will benefit all IPC members and athletes by strengthening the overall classification framework, enhancing transparency, and promoting trust in Para sport competitions.
- More information is available at: [IPC - Classification research](#).



# 2026 IPC CLASSIFICATION RESEARCH GRANT <sup>16</sup>



***Competitive Grant funding***



**Two-year delivery period (2026-2028)**



**Available to all members**



# CLASSIFICATION RESEARCH GRANT 1ST CALL 2025 - APPLICATION OVERVIEW

63 > 32 → 6

PROJECTS  
APPLIED

PARA  
SPORTS

Successful  
Applications

17

6

7

3

30

IF

IOSD

RIF

NPC

RC





# **APPLICATION PROCESS**

WHAT IS NEW COMPARED TO 2025



# APPLICATION PROCESS AND CRITERIA

- The selection process will be carried in 2 phases.

Phase 1	Phase 2
Project summary (3 pages template)	Full project submission, including all methodological components. (6000 words template)
Budget band	Budget breakdown
IF Support letter (optional)	IF support letter (mandatory) Other supporting documents (optional)



# PHASE 1



Maximum 3 Pages - Scientific content only, according to the template



Phase 1 is designed to identify research projects which align most closely with the identified priorities of this Grant, with outstanding scientific quality, originality, and transformative potential for classification in the Paralympic movement.



Project summary presenting the core research proposal and why it is valuable for advancing knowledge and practices in Paralympic classification. The evaluation will focus exclusively on the scientific vision, ambition, and plausibility of the proposed research with close alignment with the Grant priorities.



# PHASE 1 TEMPLATE

## PROJECT TITLE

Provide a clear, specific, and descriptive title (max 20 words).

## EXECUTIVE SUMMARY

## RESEARCH VISION AND ORIGINALITY

- CORE RESEARCH QUESTION
- STATE OF THE ART AND ADVANCEMENT
- ORIGINALITY AND AMBITION
- SCIENTIFIC RISK

## CONCEPTUAL APPROACH AND FEASIBILITY

## TEAM EXPERTISE AND CAPABILITY

## REFERENCES (IF APPLICABLE)



# SELECTION PROCESS AND CRITERIA PHASE 1 23

- The selection process will be carried out by the Selection Committee, which is appointed by the IPC.

Transformative Potential

Originality & Motivation

Scientific Plausibility

Team Capacity

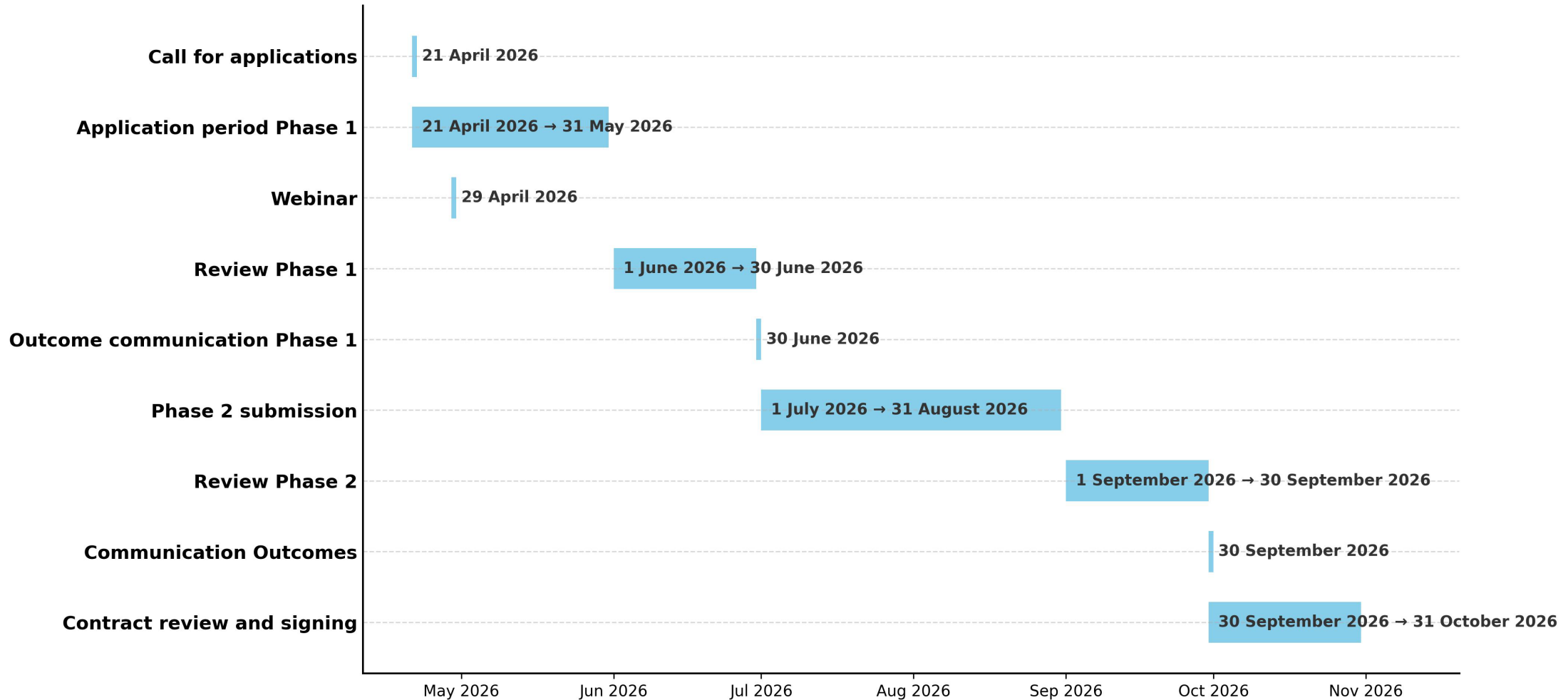
Clarity of Research Vision

Phase 2

Rejected



## Timeline of Call Activities 2026



# BUDGET

APPLICATIONS CAN BE MADE IN 4 DIFFERENT BANDS:

up to €100,000

**B**

**C**

up to €50,000



up to €150,000

**A**

**D**

up to €30,000



# ELIGIBLE ACTIVITIES

Reviewing existing and/or developing valid, reliable and practical methods for measuring eligible impairments with potential transferable outcomes across multiple Para sports;

Reviewing existing and/or developing valid, reliable and practical methods for measuring key performance determinants;

Determining the impairment-performance relationship, minimum impairment criteria and sport classes;

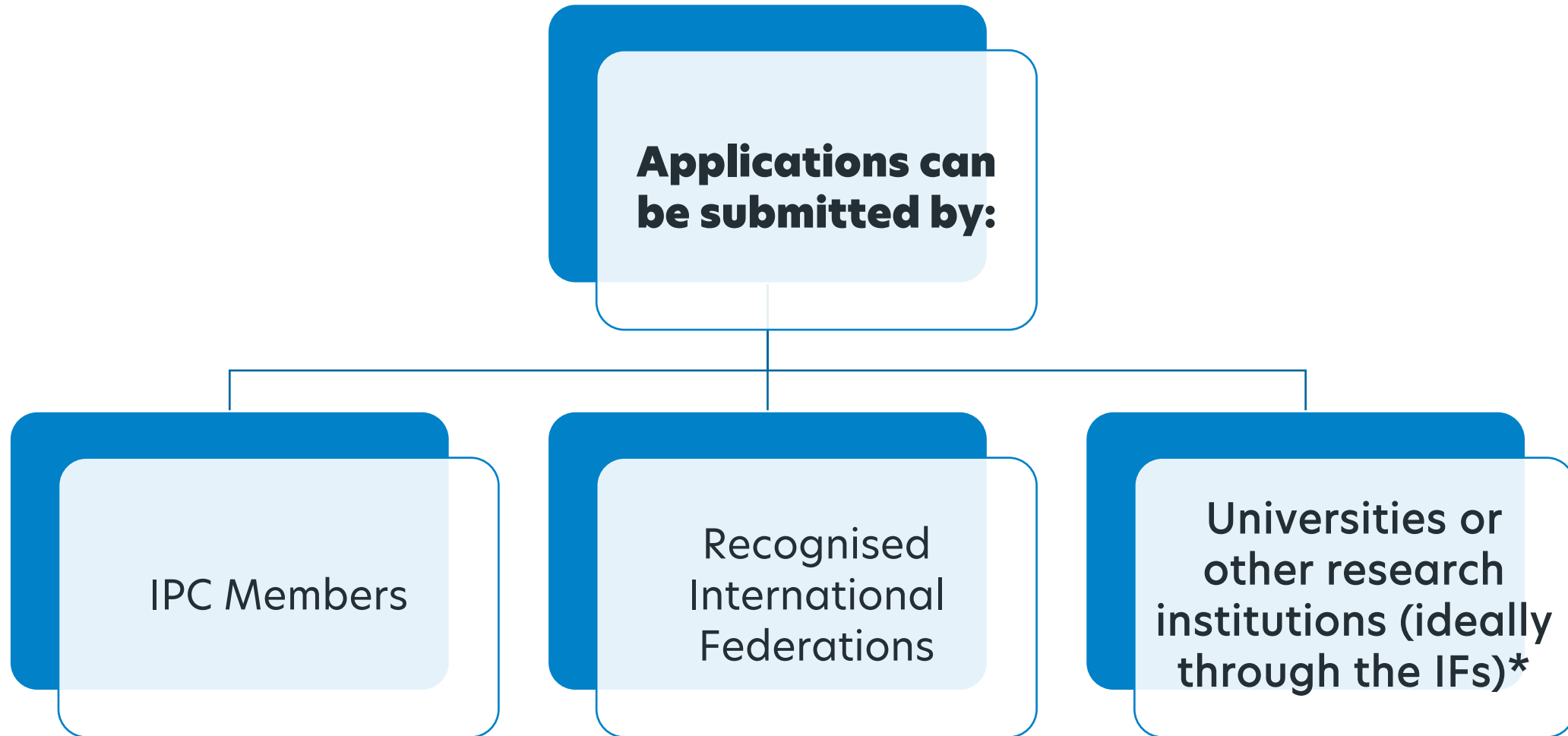
Exploring the use of innovative methods (e.g., marker less motion analysis), computer science (e.g., Inertial Measurement Units) and other technological advancements (which could include the use of artificial intelligence) in classification, especially those with clear transferability to classification practice;

Assessing the impact of adaptive equipment (i.e., interface athlete equipment) on classification outcomes;

Improving consistent and fair athlete assessment practices across Para sports, including existing assessment methods in classification and utilising best practice methods.



# APPLICATION CRITERIA AND ELIGIBILITY



# MANDATORY AND DESIRABLE APPLICATION CRITERIA 32

- The principal investigator (PI) of the Grant application and research proposal must be associated with:
  - a university,
  - research centre,
  - an IF and/or a NPC,
  
- and have proven experience in research in the relevant field (for example, sport science and health science).



# APPLICATION CRITERIA AND ELIGIBILITY

Each IF is allowed to submit multiple applications if they wish.

- In such cases where the IF applies for multiple grants, the IF must assign a priority number to each proposal, ranging from 1 (highest priority) to N (lowest priority), where N is the total number of proposals submitted. This prioritization must be clearly indicated in the submission.



# MANDATORY AND DESIRABLE APPLICATION CRITERIA

**The Grant application must include a research project, and activities directed towards development and improvement of best practice and evidence-based classification systems in Para sports.**



**The proposed project employs an appropriate research design:**

<b>Experimental,</b>	<b>quasi-experimental,</b>	<b>longitudinal,</b>	<b>or cross-sectional.</b>
----------------------	----------------------------	----------------------	----------------------------



**The research design is supported by a data collection strategy that includes an optimal sample size of international-level athletes, to ensure the validity, reliability, and transferability of the findings.**



# **APPLICATION PROCESS**

PHASE 2: INVITATION ONLY



# PHASE 2



Full project 6000 words maximum (template)



Phase 1 is designed to identify research projects which align most closely with the identified priorities of this Grant, with outstanding scientific quality, originality, and transformative potential for classification in the Paralympic movement.



Applicants invited to advance to Phase 2 are expected to submit a full proposal, including a detailed research plan, methodology, and budget. The proposal should build on the concept presented in Phase 1 and provide a comprehensive description of how the project will be carried out.



# PHASE 2 TEMPLATE

## PROJECT TITLE

Provide a clear, specific, and descriptive title (max 20 words).

## PROJECT SUMMARY/ ABSTRACT

## OBJECTIVES & RESEARCH QUESTIONS

## SCIENTIFIC & PRACTICAL RATIONALE

## METHODOLOGY

- STUDY DESIGN
- PARTICIPANTS/SAMPLE
- DATA COLLECTION
- DATA ANALYSIS
- FEASIBILITY
- WORK PACKAGES

## EXPECTED OUTCOMES & IMPACT

## OVERALL TIMELINE

## PROJECT TEAM AND COLLABORATIONS

## ETHICS

## REFERENCE

## APPENDIX



# SELECTION PROCESS AND CRITERIA

- The selection process will be carried out by the Selection Committee, which is appointed by the IPC.

Scientific Rigor & Methodology

Impact on Athlete Classification & Fairness

Innovation

Feasibility & Implementation Plan

Team experience

Approved

Rejected



# MANDATORY AND DESIRABLE APPLICATION CRITERIA 39

The Grant application and research proposal must include ethical approval of the project design by the relevant academic partner or at minimum, documentation proving that such request has been made.

In the event that approval is obtained subsequent to the submission of the Grant application, proof of the approval must be subsequently provided to the IPC.



# MANDATORY AND DESIRABLE APPLICATION CRITERIA 40

- The Grant application must align with the requirements under the 2025 IPC Classification Code and the conceptual framework for evidence-based classification in Para sport\*
- Desirable:
  - The Grant application is tied with a research centre or university;
  - Endorsement and support from relevant organisations;
  - Collaborative research project design including multiple organisations and potential impact on multiple Para sports;

\*(David L. Mann, Sean M. Tweedy, Robin C. Jackson & Yves C. Vanlandewijck (2021) Classifying the evidence for evidence-based classification in Paralympic sport, Journal of Sports Sciences, 39:sup1, 1-6).



# PAYMENT CONDITIONS AND COSTS OVERVIEW

- The Grant will be paid by the IPC to the Grant recipient by means of bank transfer in 2 parts:
  - First instalment: 80% of the Grant will be paid within 30 days of both parties signing an agreement documenting the terms of the Grant.
  - Second instalment: 20% of the Grant will be paid upon the IPC's approval of the final reports which must be submitted in accordance with the Grant Agreement.



## • ELIGIBLE COSTS

- Personnel Costs
- Travel and Accommodation
- Equipment
- Consumables and Supplies
- Data collection and Analysis Cost
- Publication Cost
- Dissemination and Communication
- Intellectual Property Rights
- Ethics Requirements
- Data management and open access
- Recruitment Costs
- Visa and work permits costs
- Translation cost

## • INELIGIBLE COSTS

- Per diem allowances
- Excessive overhead costs arising from service agreements with universities or other institutions, including indirect personnel costs;
- Costs around building infrastructure which are not directly linked to the project;
- Costs around customised pieces of equipment that would benefit individual participants in the study (for example, prosthetic devices, wheelchair and other adaptive equipment)



# GRANT IMPLEMENTATION

- Following the communication of the application outcome, the Grant recipient will have a period of four weeks to present the required documents (e.g. bank number, Institution agreement, contract, signatures), to receive the first instalment.
- The duration of each project will depend on the proposed timelines and approval of the IPC, with a potential project span between October 2026 and October 2028.
- Minimum recommended project duration is 12 months.



## AGREEMENTS

Following the communication of the application outcome, the Grant recipient and the IPC will sign a Grant Agreement that contains the terms of the Grant. A template agreement will be developed and shared by the IPC

## CHANGES TO APPROVED APPLICATIONS

Should it become necessary to make any changes to the approved activities, budget, implementation timeframes, beneficiaries etc., the Grant recipient is required to seek pre-approval from the IPC. Should there be other delays, challenges with the implementation or any other circumstances that affect the delivery of the Grant, the Grant recipient is required to notify the IPC.

## MONITORING AND EVALUATION

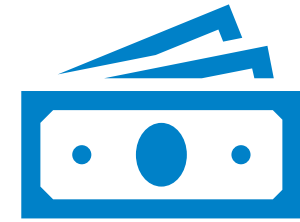
Regardless of the project duration, all projects must submit reports mid-way through the project and at the end of the project. Additionally, for multi-year long projects, further reports will be requested at the start of each year (i.e., in January 2027 and January 2028). Reporting is mandatory and is carried out through an online survey completed by the responsible person, who must be designated as such by the successful applicant



Grant recipients must submit a narrative and financial report to the IPC according to the timelines listed before



The IPC reserves the right to request additional documents (i.e., invoices, receipts) to support the narrative and financial reports.



The IPC, also, reserves the right to withhold payments if it suspects the improper or ineffective use of funds



# DISSEMINATION OF RESULTS



The IPC will provide an opportunity for the Grant recipients to present their research outcomes at dedicated forums, conferences and meetings.



A targeted classification research forum is scoped to be organised in 2027-2028 to serve as an opportunity to disseminate knowledge, network and explore further opportunities to collaborate on classification research.





**QUESTIONS?**



# THANK



# YOU

[classificationresearch@paralympic.org](mailto:classificationresearch@paralympic.org)



Photo ©: OIS



# **CLASSIFICATION RESEARCH GRANT WEBINAR Q&A**

## **2ND CALL FOR APPLICATIONS**

**APRIL 2026**

**1. What was the split of projects across these bands in 2025?**

In 2025, with 63 projects submitted, over 50% applied for the highest budget band, with a similar split between the other three bands.

**2. Is there any requirement for ethical submission in stage 1**

The ethical approval is scoped to be addressed in phase 2, i.e., the approval or proof of submission for the approval is required for those projects that proceed to phase 2 of the application process.

**3. How many projects went from Phase 1 to Phase 2 in 2025?**

The two phased approach is introduced in this 2nd call for applications; we did not have such a process in the 1st call.

**4. Is it possible to submit a proposal with a principal investigator and a co-principal investigator?**

In principle yes, but we would require a rationale behind this approach and details on the split between the roles, especially if having a PI and co-PI has an impact on the budget, project timelines or other aspects.

**5. What happens if the project is structured for 24 months, but the procedures for signing the contract extend beyond October 2026, thereby hindering the ability to complete project activities before October 2028?**

We are doing our best to mitigate this scenario from happening, but should it happen, we would need to discuss the scope of the project with the beneficiary / principal investigator.

We have a hard deadline for project completion, which we cannot change - end of October 2028.

**6. Are the criteria for going to phase 2 based on the limited number of projects, or is it based on meeting a threshold (which could be limitless)?**

It will likely be a combination of both. We do not have a set number of projects that can move to phase 2; we will look at the quality against the defined selection criteria. But ultimately, we do have a limited budget available, so this will be a further consideration we will make. For clarity, moving to phase 2 does not guarantee selection / successful application.

**7. If a project requests EU150,000 but those funds were already assigned to another project, would it be accepted with a lesser funding amount?**

In principle, we are open to reviewing the budget and exploring funding a portion of the project. It would mean that the scope of the project would change, with potentially only one or several components (work packages) being delivered rather than the full project. There could also be circumstances where part of the funding comes through a different grant / source (matched funding).

As part of phase 2, we will be reviewing each project's budget details and assess if there are areas which require revision or discussion on the proposed costs.

**8. is it mandatory to have a classifier in the team?**

Other than identifying a principal investigator, there is no requirement from our side on who should be on the team and what their qualifications are.

We recognise the value of having a 'classifier' and 'Classification' expertise within the research team.

**9. In terms of dissemination - apart from APC costs, do we need to budget for example a trip to Bonn for the classifier meetings for dissemination of findings?**

We welcome budget proposals including funding for disseminations, but this does not need to be specific to the IPC classification meeting - this meeting may not be the best place for dissemination of research outcomes. We welcome proposals that consider and identify what is the appropriate engagement with disseminating the research outcomes.

**10. For a multi-sport application - would a specific IF support level be sufficient or would you want multiple?**

if it is a multi-sport project, ideally it includes endorsement from all IFs involved. This is only required in phase 2.

**11. The same IF can submit multiple proposals?**

Yes, this is possible. We would request a priority list of projects to be identified in this case.

**12. Can reasonable participant compensation be included in the budget? UNESCO and Global Science Forum guidance advocates compensation as an ethical obligation.**

Yes, we encourage this being considered and identified within the budget. These details would only be requested in phase 2.

**13. Universities will have overheads that we can off-set - you use a term reasonable do you have clear guidance about the budget expectation here - as universities do ask us to provide written guidance**

We reflected the position on the overheads within the Grant Scheme section on ineligible costs: "Excessive overhead costs above 10% rising from service agreements with universities or other institutions, including indirect personnel costs."

We welcome the contribution from universities in waving / compensating the overheads, meaning that a higher portion of the budget can go towards the direct project delivery.

**14. There are six eligible activities, Is there a priority list from these?**

No, there is no priority within that list, all listed activities are eligible, and we welcome projects in respect to any of those.

**15. Is there any available overview of previous IPC research applications, including basic information such as the participating universities or institutions, researchers involved, and research topics?**

We are unable to disclose the details of all applications. We will share the details of the successful projects within this grant once the agreements are in place.

**16. Are there any expenses for NPCs in connection with phase 1 and phase 2?**

We do not set these – each project should consider the necessary budget and identify if there is a matched funding available (this could be via the support from the NPCs, IFs, or other type of funding).

**17. Can project applications include a Delphi study?**

Yes, Delphi studies are considered as eligible, subject to meeting the requirements under eligible activities.

**18. Can a Principal Investigator apply for different / multiple projects?**

Yes, we do not restrict this.