

# A framework for implementing Adapted Athletics programs in Australian universities

Bridie Kean

Research Scholar, Sport Performance Innovation Knowledge Education (SPIKE), Queensland Academy of Sport; PhD Candidate, School of Health and Sport Sciences

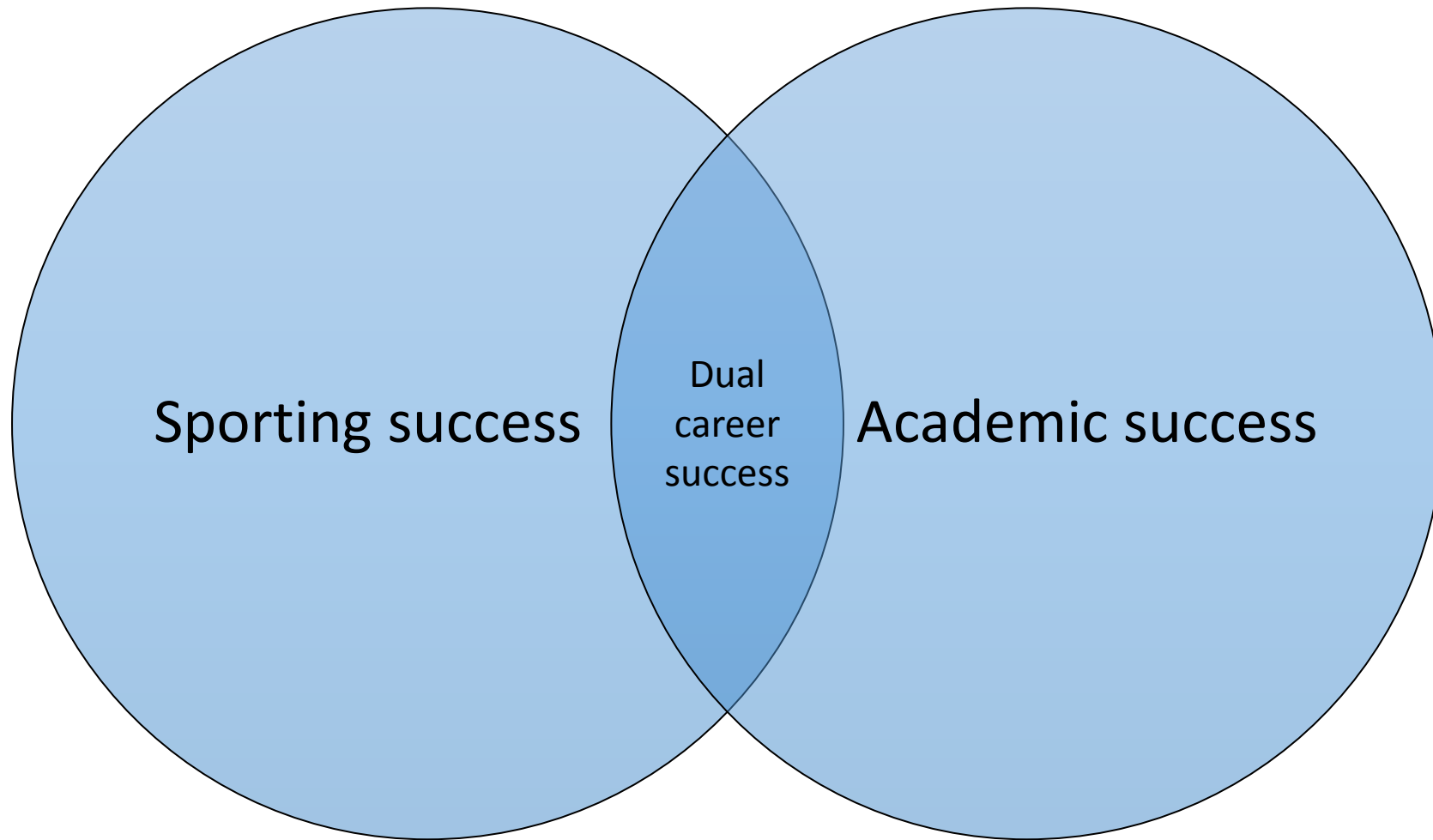
Supervisors: Dr Florin Oprescu, Dr Michèle Verdonck, Professor Marion Gray and Professor Brendan Burkett



A FRAMEWORK FOR IMPLEMENTING  
**ADAPTED ATHLETICS**  
**PROGRAMS**  
IN AUSTRALIAN  
UNIVERSITIES



# What is success in dual career pathways?



# What do we know about dual career pathways?

## Challenges

- Both require significant time and effort (Stambulova & Wylleman, 2014; Tekav, Wylleman & Erpic, 2015; de Subijana., Barriopedro, & Conde (2015)

## Benefits

- Greater opportunities in post athletic life; (Wylleman, Reints, & De Knop, 2013; Torregrosa, Ramis, Pallares, Azocar & Selva, 2015
- Retirement process from sport easier (Torregrosa, 2015)
- Can create balance (Aquilina, 2013)




## Australian context

- 1995 - Athlete Career and Education program was implemented
- 2015 – Elite Athlete Friendly University (EAFU) network and guidelines established
- 38 EAFU Universities in Australia (De Bosscher et al. 2015)
- Guidelines include flexibility for study and enrolment (DeBosscher et al. 2015)
- Settling for lower grades (Cosh & Tully, 2014)
- Time management challenges (Cosh & Tully, 2014; 2015)



# Method

- Alignment with constructivist paradigm (Stake, 1995; Yin, 2003; Baxter, 2008)
- Studies issues within bounded contexts (Yin, 2013)
- Focusing on the “how” and “why” (Baxter, 2008)

| TRIANGULATION OF SOURCES   | AUSTRALIAN WHEELCHAIR BASKETBALL CASE | U.S ADAPTED ATHLETICS PROGRAM CASE | AUSTRALIAN UNI/ SPORT STAKEHOLDERS |
|--|---------------------------------------|------------------------------------|------------------------------------|
|  PARTICIPANTS               | 13                                    | 21                                 | 17                                 |
|  ATHLETES                   | 8                                     | 16                                 | 0                                  |
|  COACHES                    | 3                                     | 3                                  | 0                                  |
|  ATHLETIC TRAINER          | 0                                     | 1                                  | 0                                  |
|  MANAGERS/ ADMINISTRATORS | 2                                     | 1                                  | 17                                 |

## DATA INFORMATION

JAN -  
JUL 15

APRIL  
15

OCT  
15

NOV  
15

NOV  
16

AUSTRALIAN WHEELCHAIR BASKETBALL CASE

U.S ADAPTED ATHLETICS  
PROGRAM CASE

AUSTRALIAN UNI/  
SPORT STAKEHOLDERS

Today's focus: How  
these studies  
informed  
knowledge of  
factors influencing  
dual careers

What are environmental facilitators to preparation and performance for Australian dual career athletes?

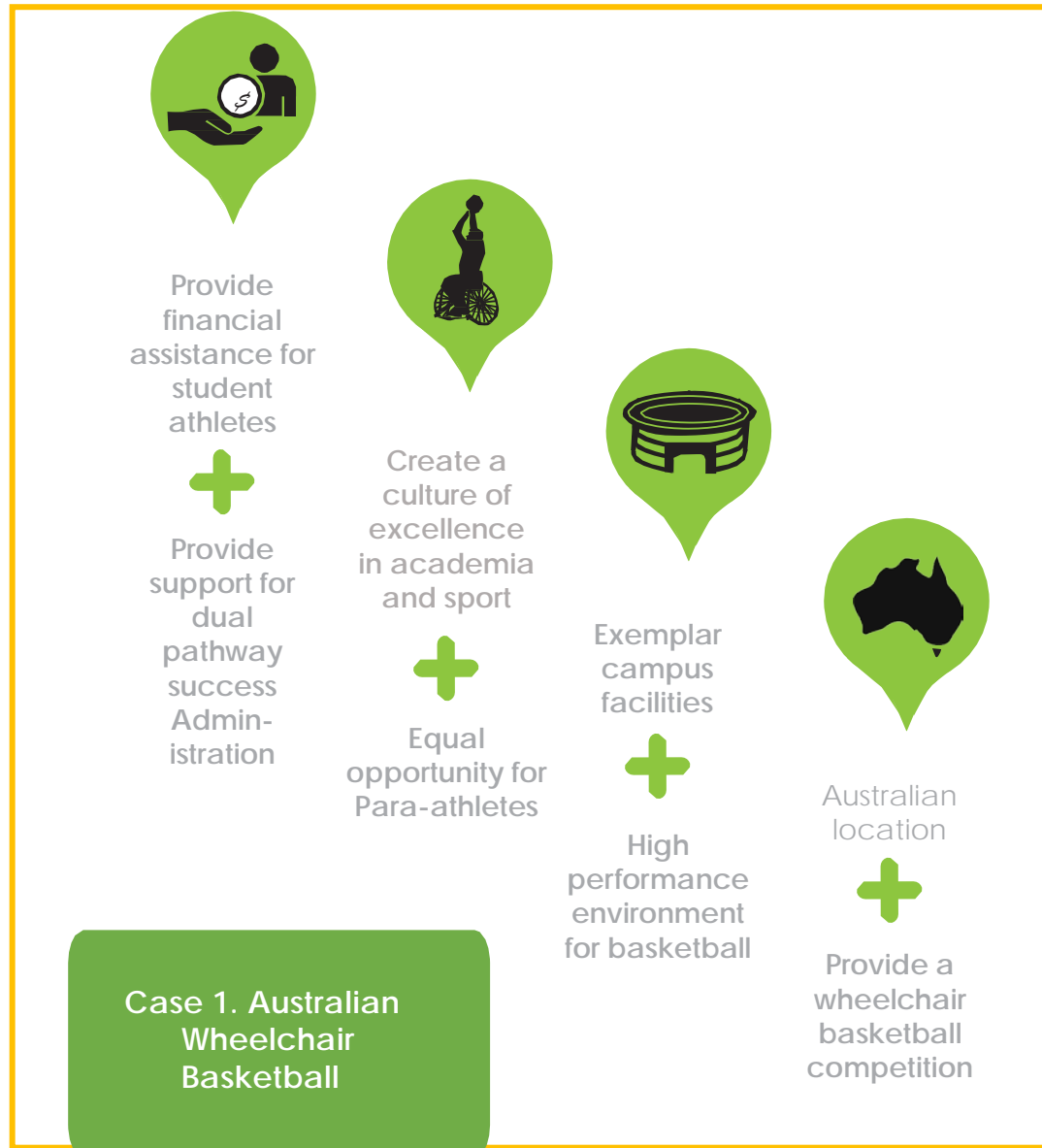


# Study One: Socio-economic determinants





# Study One: Environmental recommendations



*“The biggest one is financial support, so these athletes are working really, really hard and to be successful these days all we’re looking for unfortunately is gold medals, gold medals, gold medals and to do that you need financial support and to do that these athletes need as much support from everyone to get that” - coach*

*“I think uni’s have the ability or potential to take away financial worry by offering a full-ride scholarship; accommodation, whether it’s on campus or whatever, so that way you don’t have to worry about your accommodation being a long way from your classes and your training environment, potentially be 90% of where you do all your training through like the sport and rec centre on campus” - athlete*

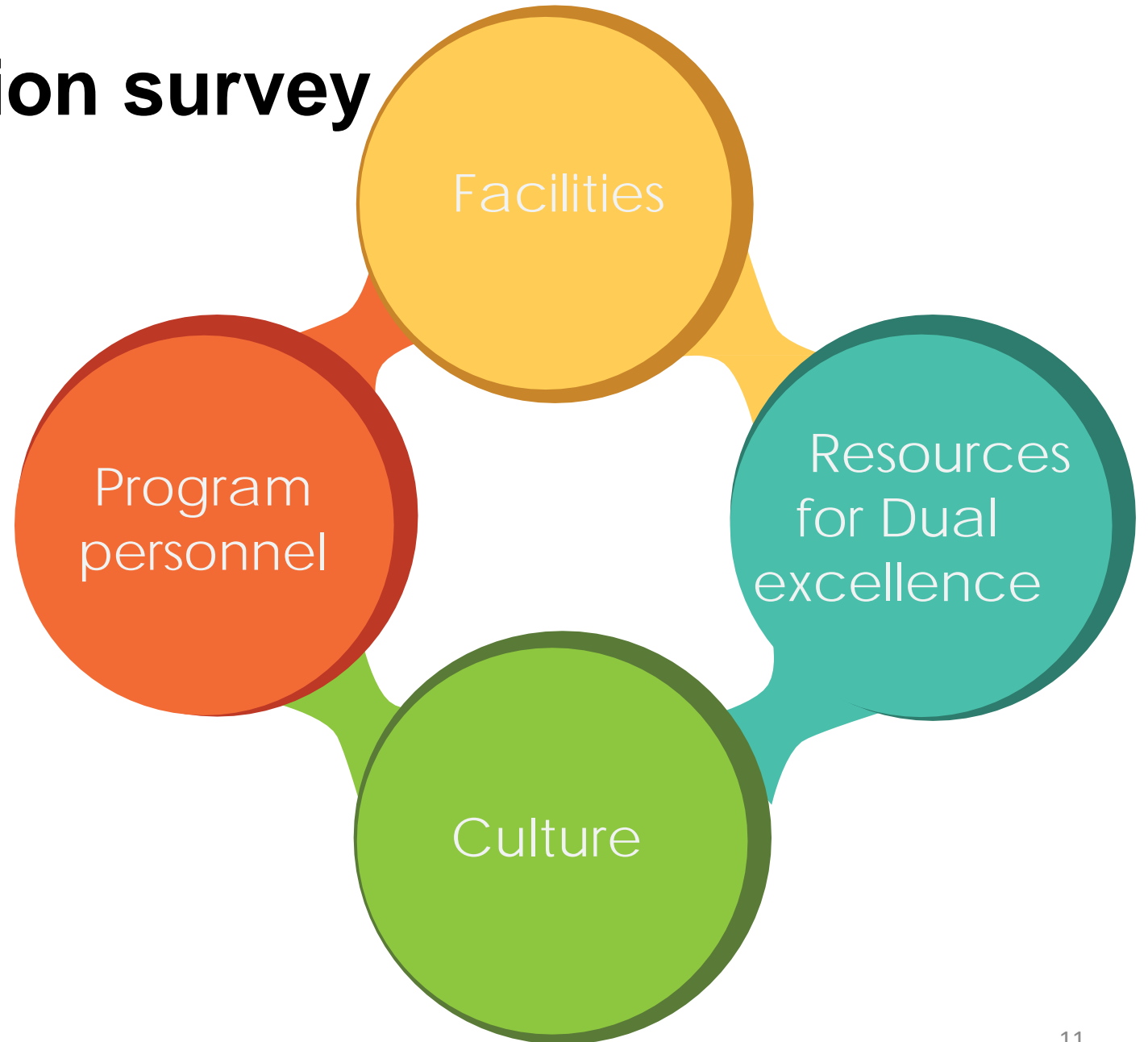
**Social determinants: Who are the key stakeholders in dual career pathways for Australian para-athletes ?**

# Study Three: Evaluation survey

n = 17 stakeholders

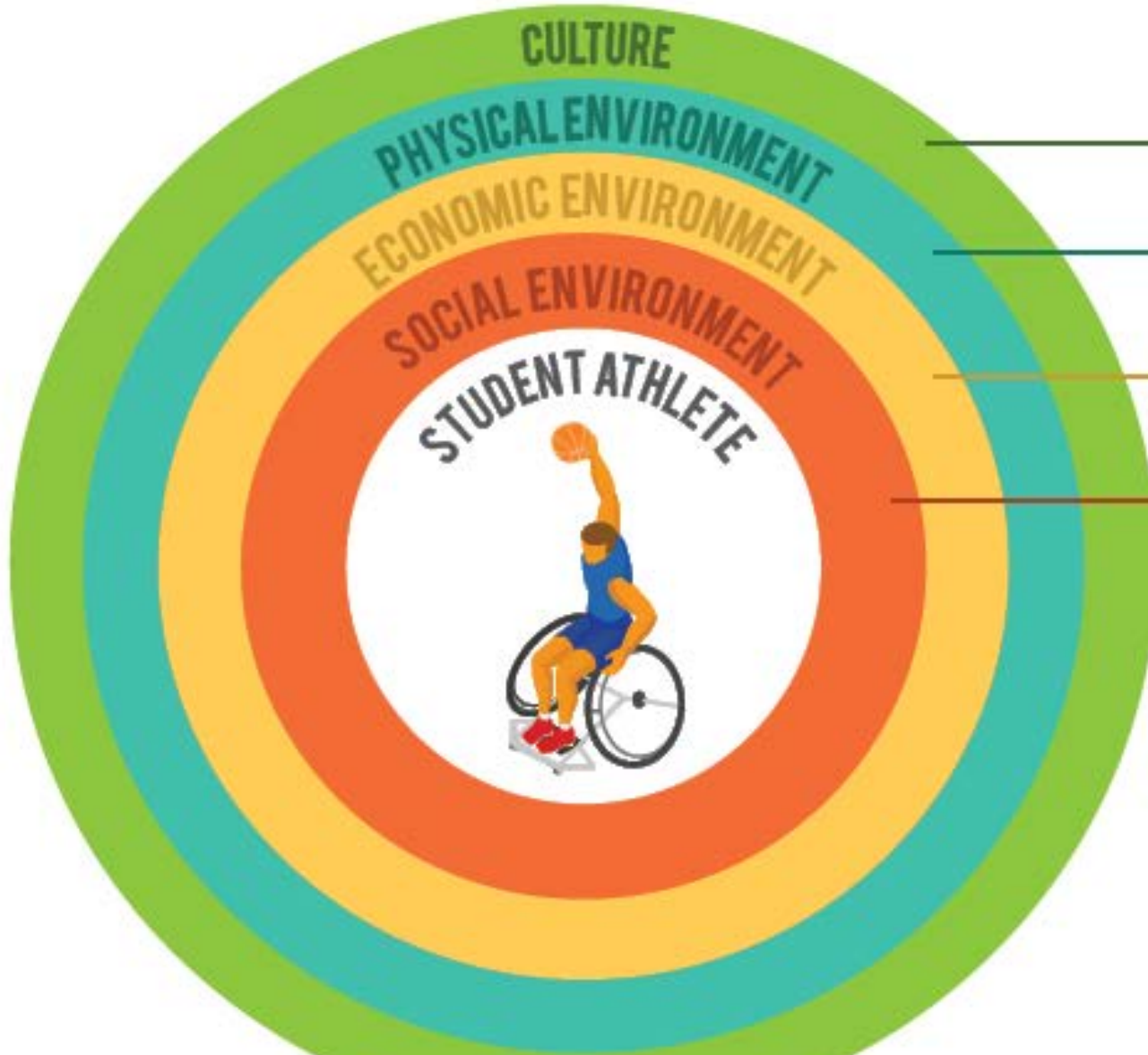
## Social determinants: Who are the key stakeholders?

- Academic staff
- Australian University Sport
- Coaches
- EAFU/High performance staff
- Personal excellence officers
- Sport science practitioners
- Sporting bodies (state and national)
- Student-athletes
- University senior staff
- University sport staff
- University student services staff



**Creating the optimal dual career environment in  
Australian universities: determinants to consider for  
dual careers in Paralympic sport and study**

# A framework for implementing Adapted Athletics programs in Australian universities: Recommendations for practice



**Culture:** University policy and procedures that support pursuit of dual excellence, partnerships with sporting organisations

**Facilities:** Accessible training facilities; accessible parking, equipment storage for wheelchairs, centralised venues

**Financial considerations:** Budget for program, Financial assistance for student athletes including scholarships for living expenses, Policies to support dual excellence

**Key stakeholders working in partnership to support dual success**



LEARN RESEARCH CONNECT EXPLORE



# USC Stadium

Explore / USC locations / Sport and fitness

## USC Stadium

- Cym and fitness
- USC Pool
- Track and field
- Hard courts and playing fields
- Social sport
- University Games
- Sports awards
- USC Spartans merchandise
- USC Sport Clinic
- Community sporting groups
- Sunshine Coast Sports Hall of Fame
- Contact USC Sport

## USC Stadium facilities

The University's A\$15 million indoor Sports Stadium, located at the Sippy Downs Campus, is used for University, school, community sporting events and home to the Sunshine Coast Lightning for training and home games. The national standard facility includes:

- 3 netball, basketball and volleyball courts
- 4 badminton courts
- 1 international-sized futsal court
- timber sports thrust floor
- 6 large toilet/changeroom areas
- tiered spectator seating
- a total floor size of 3,705 square metres
- air-conditioning
- two retractable seating units with a capacity of 2200 seats
- broadcast-quality lighting
- 1 netball-specific drop-in floor
- corporate box



## Stadium fees

Off peak rate:

- A\$45 per court per hour – visitors
- A\$40 per court per hour – University staff and students

Peak rate (weekends and from 5pm each weeknight - includes lighting):

- A\$50 per court per hour – visitors
- A\$47 per court per hour – University staff and students

Casual entry:

## Bookings and venue hire

Complete the [Online application to hire form](#), please read the [Conditions of hire](#) prior to making an application to hire.

For more information contact [USC Sport](#).



# USC SEEDS Excellence Scholarships

## Economic environment

... / Learn / What will I pay? / Scholarships

2017 schedule of fees

How to pay your fees

HECS-HELP

SA-HELP

FEE-HELP

OS-HELP

Commonwealth supported  
places

Government assistance

Student loan scheme

### Scholarships

How to apply for a USC  
scholarship

Headstart scholarships

Indigenous and Australian  
South Sea Islander students

Faculty prizes and awards

OP Guarantee Scholarship  
Scheme

Scholarships for students  
on low incomes

External scholarships and  
awards

Applications open 1 May and close on 30 June for Semester 2, 2017

### Set the pace

Become a Student Para-Athlete and combine Tokyo 2020 training with a University degree. USC offers a dual-pathway program, including a full package of support to complement your training. You'll have access to world class facilities and amazing staff to deliver a truly unique experience. USC SEEDS Scholarships are now open to help you go for gold in 2020.



### About the Scholarship

The USC SEEDS program currently provides para-athletes with the opportunity to combine study with high performance training. The program is supported by Basketball Australia and Queensland Academy of Sport Centre of Excellence for Applied Sport Science Research.

Classifiable as an athlete with a disability under international sporting code classification

#### ELIGIBILITY:

- Classifiable as an athlete with a disability under international sporting code classification
- Commencing or continuing domestic students in an undergraduate or post graduate degree program at USC
- permanent resident of Australia, Australian citizen, New Zealand citizen or Permanent Australian Humanitarian Visa holder

#### SELECTION CRITERIA:

- High level sporting achievement in elite sport
- Potential to continue to perform in sporting discipline at a high level [NB: Talent transfer athletes are encouraged to apply]
- Academic merit

**ELIGIBLE PROGRAMS:** All undergraduate and postgraduate programs

**NUMBER AVAILABLE:** Varies

**VALUE:** A\$2,500 per semester

**APPLICATION:** [USC SEEDS Excellence Scholarships Application Form \(PDF 337KB\)](#)

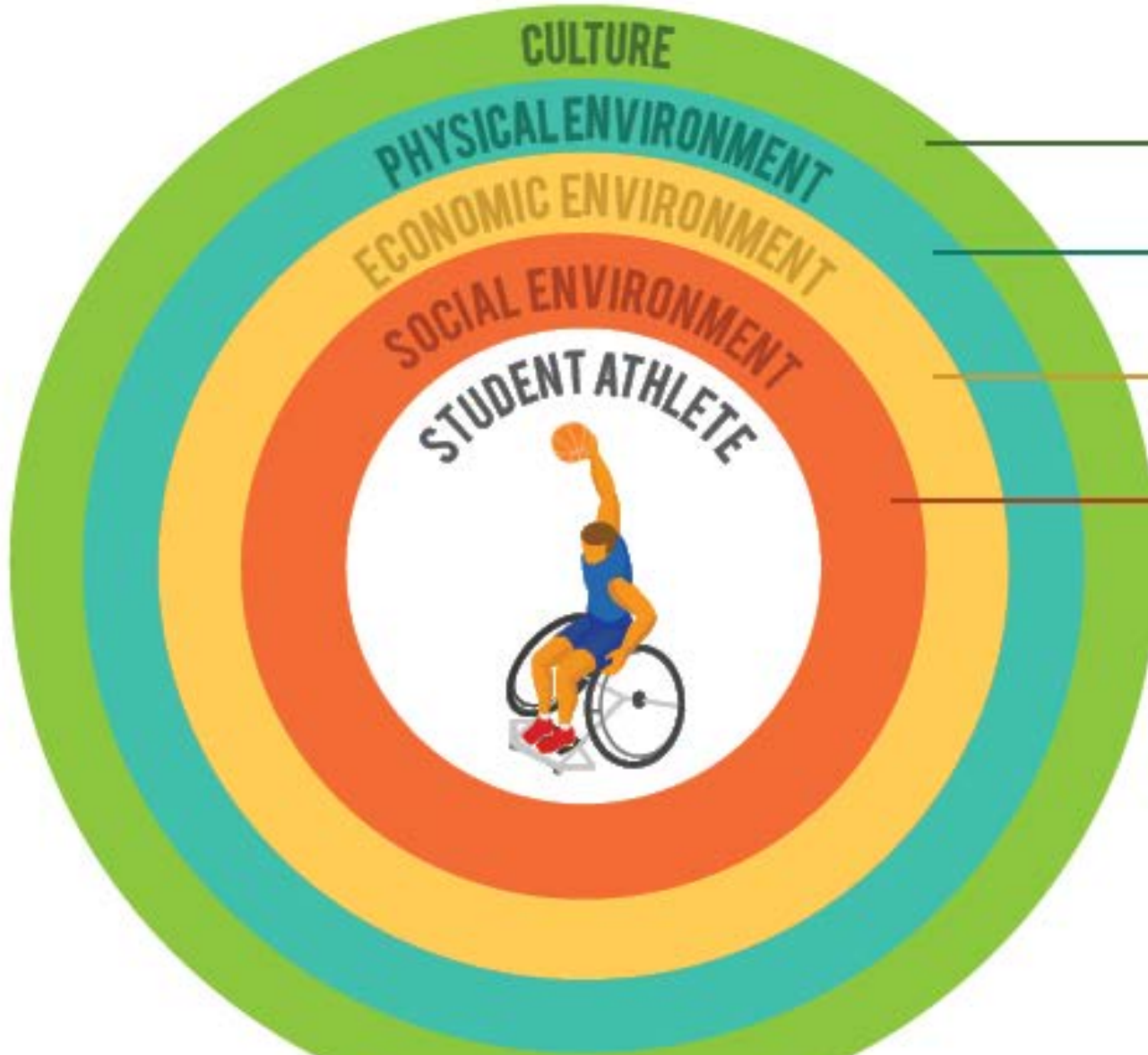


Social-economic determinants

Key stakeholders and partnerships



# A framework for implementing Adapted Athletics programs in Australian universities: Recommendations for practice



**Culture:** University policy and procedures that support pursuit of dual excellence, partnerships with sporting organisations

**Facilities:** Accessible training facilities; accessible parking, equipment storage for wheelchairs, centralised venues

**Financial considerations:** Budget for program, Financial assistance for student athletes including scholarships for living expenses, Policies to support dual excellence

**Key stakeholders working in partnership to support dual success**

# Student-athlete centred

## USC wheelchair basketballer selected for Australia

... / News archive / 2016 / November

|           |           |
|-----------|-----------|
| 2017      | 143 items |
| 2016      | 457 items |
| December  | 25        |
| November  | 37        |
| October   | 36        |
| September | 49        |
| August    | 45        |
| July      | 39        |
| June      | 39        |
| May       | 40        |
| April     | 45        |
| March     | 47        |
| February  | 40        |
| January   | 15        |
| 2015      | 354 items |
| 2014      | 360 items |
| 2013      | 362 items |
| 2012      | 321 items |

Sporting success

Dual  
career  
success

Academic success

9 NOVEMBER 2016

University of the Sunshine Coast student Steven Elliott has been selected to represent Australia in wheelchair basketball at the Kitakyushu Champions Cup in Japan next week.

Steven, 21, of Gympie, is combining a Sports Studies degree with high level training to become an inaugural recipient of USC's Sports Elite and Education Dual Stream (SEEDS) scholarships, and was named in the Australian Under 23 Sports team to take part in the British and German four-nation tournament.

Launched at USC this year, the SEEDS program is the first dual para-sport and tertiary program in Australia.

Steven plays as a power forward for the RSL Queensland Spinning Bullets in the National Wheelchair Basketball League, and the tournament in Japan will be his debut for Australia.

Steven, a first-year USC student, said he couldn't wait to compete at the international level.



# References

- Aquilina, D. (2013). A study of the relationship between elite athletes' educational development and sporting performance. *The International Journal of the History of Sport*, 30(4), 374-392.
- Baxter, P., & Jack, S. (2008). Qualitative case study methodology: Study design and implementation for novice researchers. *The qualitative report*, 13(4), 544-559.
- Cosh, S., & Tully, P. J. (2014). "All I have to do is pass": A discursive analysis of student athletes' talk about prioritising sport to the detriment of education to overcome stressors encountered in combining elite sport and tertiary education. *Psychology of Sport and Exercise*, 15(2), 180-189.
- Cosh, S., & Tully, P. J. (2015). Stressors, Coping, and Support Mechanisms for Student Athletes Combining Elite Sport and Tertiary Education: Implications for Practice. *TSP*, 29(2).
- Creswell, J. W. (2012). *Qualitative inquiry and research design: Choosing among five approaches*: Sage.
- De Bosscher, V., Shibil, S., Westerbeek, H., & Van Bottenburg, M. (2015). *Successful elite sport policies: An international comparison of the Sportpolicy Factors Leading to International Sporting Success (SPLISS 2.0) in 15 nations*. Meyer & Meyer Verlag.
- de Subijana, C. L., Barriopedro, M., & Conde, E. (2015). Supporting dual career in Spain: Elite athletes' barriers to study. *Psychology of Sport and Exercise*, 21, 57-64.
- Fletcher, D., & Streeter, A. (2016). A case study analysis of a high performance environment in elite swimming. *Journal of Change Management*, 1-19.
- Fryer, C., Mackintosh, S., Stanley, M., & Crichton, J. (2012). Qualitative studies using in-depth interviews with older people from multiple language groups: methodological systematic review. *Journal of advanced nursing*, 68(1), 22-35. Retrieved from <http://onlinelibrary.wiley.com/store/10.1111/j.1365-2648.2011.05719.x/asset/j.1365-2648.2011.05719.x.pdf?v=1&t=ie2bpjyb&s=c859e2aad040cb6f665b4df37093ca27d7d6ef46>
- Stake, R. E. (1995). *The art of case study research*. Sage.
- Stambulova, N. B., & Wylleman, P. (2015). Special Issue: Dual career development and transitions. *Psychology of Sport and Exercise*, 21, 1-134.
- Tekavc, J., Wylleman, P., & Erpič, S. C. (2015). Perceptions of dual career development among elite level swimmers and basketball players. *Psychology of Sport and Exercise*, 21, 27-41.
- Wylleman, P., & Reints, A. (2010). A lifespan perspective on the career of talented and elite athletes: Perspectives on high-intensity sports. *Scandinavian journal of medicine & science in sports*, 20(s2), 88-94.
- Yin, R. K. (2013). *Case study research: Design and methods*. Sage publications.